



LIVERMORES
THE ESTATE AGENTS

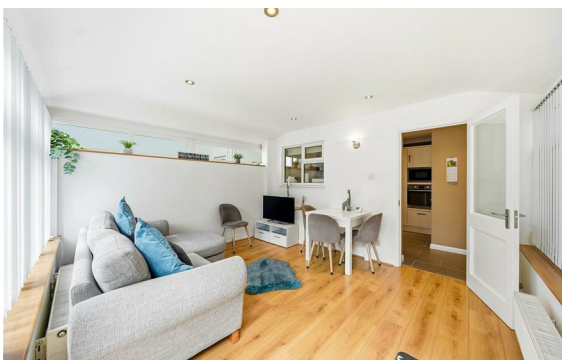
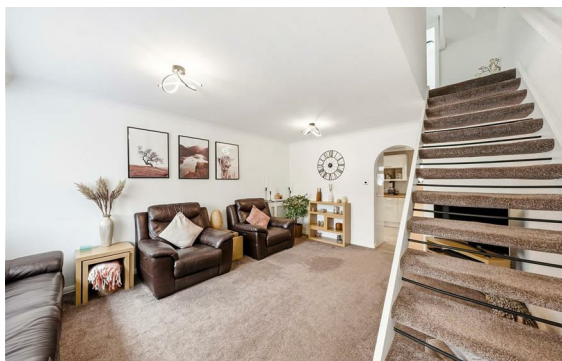
3 Bedrooms
House - Detached
Located in Greenhithe
£475,000



dartford@livermores.co.uk

www.livermores.co.uk

01322 228090



LIVERMORES
THE ESTATE AGENTS

1 Hythe Street
Dartford
Kent
DA1 1BE

01322 228090

dartford@livermores.co.uk

www.livermores.co.uk

OFFERS IN THE REGION OF £475,000... This beautifully presented DETACHED HOUSE is located approximately a third of a mile walk from GREENHITHE MAINLINE STATION. The property measures an impressive 990 feet squared and is set over 3 levels. To the ground floor there are 2 reception rooms, a lovely modern kitchen and cloakroom. To the 1st floor there are 2 good size bedrooms both with fitted wardrobes and a further double bedroom and a well presented shower room to the 2nd floor. To the rear there is a well maintained garden with outbuilding and a large patio.

Ideally located for easy access to the M25 this lovely property needs to be viewed internally to fully appreciate the size and condition. VIEWING RECOMMENDED

Energy Efficiency Rating: C

Agents Note: Whilst every care has been taken to prepare these particulars, they are for guidance purposes only. All measurements are approximate and are for general guidance purposes only and whilst every care has been taken to ensure their accuracy, they should not be relied upon and potential buyers/tenants are advised to recheck the measurements.